

A grid of numerous small, circular carpet samples in various colors, including shades of grey, brown, orange, yellow, green, pink, and purple. The samples are arranged in a regular pattern against a dark background.

# Retailer Reference Guide

ulster™

[www.ulstercarpets.com](http://www.ulstercarpets.com)

# Welcome...

I would like to take this opportunity to welcome you to our Retailer Reference Guide. This guide has been compiled to offer you an insight into Ulster Carpets, our core values, and our long term commitment to our retailer and to the industry.

We have made significant investments in new ranges and refreshed some of our existing ranges and this guide showcases the entire Ulster offering accompanied by stunning room set and close up photography.

I know that at Ulster we are extremely fortunate to have such good relationships with our retailers and, indeed we can count many of you as our friends. I thank you for your continued support over the years and assure you that we are clearly focused on strengthening those valued relationships going forward.

**Nick Coburn**  
Managing Director



Ulster Velvet Fauna (W2607)

# Contents

*This retailer reference guide provides you with all of the information you will need on current Ulster Carpets products. Use the guide below to find the carpet you are looking for either by style or range.*

## Contemporary Traditionals

Anatolia	6 - 8
Blossom	12
Boho Collection	13 - 17
Braeburn	18 - 19
Country House Collection	20 - 23
Watercolours	24 - 25

## Tonals

Natural Choice Axminster	41
--------------------------	----

## Plains

Grange Wilton	31 - 33
HABITÜS	34 - 39
Heritage Twist	40
Natural Choice Plains	42
Open Spaces	44 - 53
Ulster Velvet	62 - 64
York Wilton	65 - 68

## Classic Traditionals

Glenavy	26 - 27
Glendun	27 - 28
Glenmoy	29 - 30

## Fusion

Fusion	69 - 72
--------	---------

## the mix

the mix	73 - 76
---------	---------

## Open Ground

Athenia	9 - 11
Sheriden	54 - 56
Tazmin	57 - 61

## Ranges

Anatolia	6 - 8
Athenia	9 - 11
Blossom	12
Boho Collection	13 - 17
Braeburn	18 - 19
Country House Collection	20 - 23
Watercolours	24 - 25
Glenavy	26 - 27
Glendun	27 - 28
Glenmoy	29 - 30
Grange Wilton	31 - 33
HABITÜS	34 - 39
Heritage Twist	40
Natural Choice Axminster	41
Natural Choice Plains	42
Open Spaces	44 - 53
Sheriden	54 - 56
Tazmin	57 - 61
Ulster Velvet	62 - 64
York Wilton	65 - 68
Fusion	69 - 72
the mix	73 - 76

*Whilst every effort is made to achieve accurate colour reproduction of products and colour palettes in this brochure, printing limitations can be misleading. Selection of products should be made from actual samples.*

# Weaving Quality since 1938

Ulster Carpets was founded by George Walter Wilson in Northern Ireland in 1938 and is still privately owned by the founder's family. Ulster has taken the positive attributes associated with being a family-owned establishment and combined them with a forward-thinking, global approach to business. The result is a technologically advanced, service-driven company with flair, flexibility and a passion for quality.

All of our woven carpets are manufactured in Northern Ireland, in one of the most technically advanced carpet weaving plants in the world. In recognition of the PSYLO™ weaving technology we developed, we received the prestigious 'Queens Award for Enterprise'.

All of our yarn is manufactured in our own spinning plant in Dewsbury, North Yorkshire, enabling us to have total control over the quality of yarn and long-term security of supply.

Our woven carpets are quadruple-sheared and inspected three times, and all of our stock ranges have been upgraded to a heavier weight 2 ply yarn. This improved yarn will enhance the durability of the carpet and its lifespan. The fact our headquarters and manufacturing plant is based within the UK, means we are able to offer speedy delivery times from our stock holdings, leading to shorter lead times and happy consumers. Our award-winning Customer Services Team are on hand to process orders and assist you quickly with any Ulster-related enquiries.

There are many advantages to an 'Ulster' carpet including superior quality and design. Our UK based design team are constantly creating exciting and fresh designs to suit all tastes, from the heavily patterned traditional ranges such as Glenavy to the fresh contemporary Boho Collection. We hope you enjoy browsing our current product offerings and discovering what Ulster has to offer.





# Sustainability

Situated on the banks of the River Bann, the beautiful surroundings of our Castleisland factory are a constant reminder of our responsibility to the environment around us. Ulster Carpets have developed a Sustainability Policy which sets out a plan to become completely carbon neutral. Since its implementation in 2001 we have reduced our carbon emissions by 52%. We continue to review our policies to ensure this figure reduces year on year. Through the development of our own innovative technology, Ulster Carpets have managed to significantly reduce the amount of waste produced throughout the manufacturing process. Of the waste still generated, 96% of this is diverted from landfill through many different recycling channels including fibres for equestrian surfaces. At Ulster Carpets, we want all our staff to share the vision of becoming carbon neutral and so we have a KPI that all employees undergo environmental awareness training at least once a year.

# Efficient Service

Our location within the UK and Ireland means we are well placed to offer a timely and efficient service. More than 95% of our products can be serviced immediately from extensive stockholdings. Once received over 90% of orders are delivered within 5 working days to anywhere in the UK and Ireland. Our award-winning, Northern Ireland based Customer Services Team are always on hand to assist you with orders or enquiries.



# Multi-Widths

All our ranges are offered in colour matching multi-widths, minimising waste and enabling the most cost-effective installation of our carpet to any floor space. Our woven axminster products (with the exception of Elements Organza & Boho Collection) are available in 4.57m, 3.66m, 2.74m, 1.83m and 0.91m widths, while all woven wilton and tufted products are available in 5m, 4m, 3m, 2m and 1m widths. All widths will colour match if requested when the order is placed.

# Quality Assurance

All of our axminster and wilton products are manufactured entirely within the UK, from the spinning and processing of wool at Ulster Yarns (Yorkshire) right through to weaving and finishing in our Northern Ireland headquarters. This level of control allows for stringent quality checks at every stage, ensuring only the finest carpets bear the Ulster name. Our experienced team of weavers have honed their skills and expertise over many years and take great pride in the superior quality carpet they produce. Our loop pile Open Spaces Collection is woven by Danfloor (part of the Ulster Group) in a state of the art factory in Denmark. The same attention to detail is applied and the skilled team produce 100% wool carpets to an exceptional standard.



# Contract Focus

As well as our stock offering, Ulster Carpets manufacture bespoke woven axminster for many of the worlds most prestigious locations including the Burj Al Arab (Dubai), The Savoy Hotel (London), George V (Paris) and Mandalay Bay, (Las Vegas). Our unique PSYLO™ weaving technology, commitment to innovation and talented design teams have led Ulster to become the market leader. For smaller projects, many of our stock ranges are suitable for heavy contract wear. To learn more about this, visit our website ([www.ulstercarpets.com](http://www.ulstercarpets.com)) or speak to your local Ulster representative.

# Anatolia

80% Wool / 20% Nylon  
Woven Axminster

Available in 4.57m, 3.66m,  
2.74m, 1.83m & 0.91m  
Runner 0.69m

Suitable for Extra Heavy Wear

*Anatolia is a quality woven axminster range that delivers style and elegance. A flowing stair runner, a subtle scroll or an opulent medallion can provide the inspiration for any living space.*

*Anatolia offers versatility and has the ability to look timelessly elegant in one setting and expressively modern in another.*

*Available in ten different colourways and three designs, Anatolia can create an aspirational yet attainable look.*

## Anatolia Medallion - Note to Retailers

*For those consumers who wish to use the medallion design on their staircase please be advised that the medallion element is not centralised within the overall design. To counteract this we recommend the following:*

- *Use the runner design as the medallion is centrally positioned*
- *The versatility and even distribution of the scroll design sits perfectly on a staircase*

*Alternatively, if neither of these options are applicable, a 1.83m wide cut will be needed from which the required width will be cut to ensure the medallion is centred. Ulster Carpets is not responsible for the subsequent extra cost.*



Runner Dune (41/2289)



42/2287 Medallion Lotus



41/2287 Medallion Dune



42/2288 Scroll Lotus



41/2288 Scroll Dune



42/2289 Runner Lotus



41/2289 Runner Dune



# Anatolia



44/2287 Medallion Nile Gold



43/2287 Medallion Tunis



81/2293 Medallion Fez



44/2288 Scroll Nile Gold



43/2288 Scroll Tunis



81/2298 Scroll Fez



44/2289 Runner Nile Gold



43/2289 Runner Tunis



81/2299 Runner Fez



11/2287 Medallion Delta



72/2287 Medallion Isis



52/2287 Medallion Luxor



21/2374 Shirvan Petra Red



11/2288 Scroll Delta



72/2288 Scroll Isis



52/2288 Scroll Luxor



71/2623 Shirvan Oasis



11/2289 Runner Delta



72/2289 Runner Isis



52/2289 Runner Luxor

# Anatolia



Medallion Fez (81/2293) & Runner Fez (81/2299)

# Athenia

80% Wool / 20% Nylon  
Woven Axminster

Available in 4.57m, 3.66m,  
2.74m, 1.83m & 0.91m  
Runner 0.69m

## Suitable for Heavy Wear

*Athenia, a firm consumer favourite, is a dynamic and contemporary product, available in distinctive co-ordinating motif, pindot and runner designs.*

*Given its innate adaptability and elegance, Athenia can be used to create a wide range of border, runner and rug combinations in the home. Alternatively, one Athenia design can be effortlessly used to inject a rich fusion of colour and style to any interior space.*



91/2707 Motif Black



91/2572 Pindot Black



91/2711 Runner Black



Motif Black (91/2707) & Runner Black (91/2711)



# Athenia



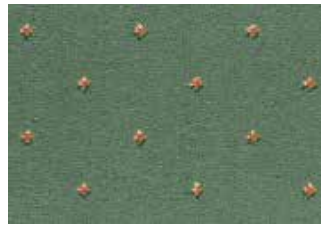
4/2566 Motif Green



45/2566 Motif Pale Green



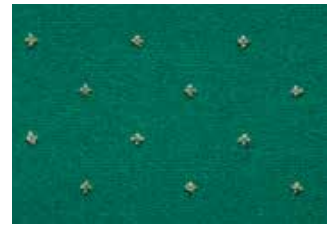
9/2566 Motif Turquoise



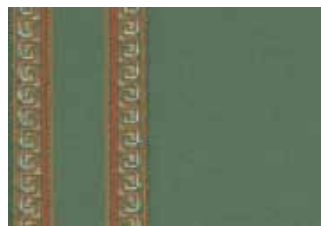
4/2572 Pindot Green



45/2572 Pindot Pale Green



9/2572 Pindot Turquoise



4/2583 Runner Green



45/2583 Runner Pale Green



9/2583 Runner Turquoise



10/2566 Motif Red



22/2566 Motif Wine



12/2566 Motif Royal Blue



10/2572 Pindot Red



22/2572 Pindot Wine



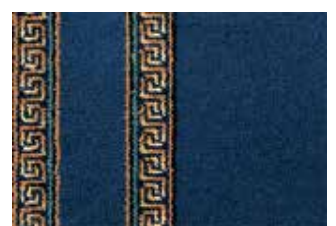
12/2572 Pindot Royal Blue



10/2583 Runner Red



22/2583 Runner Wine



12/2583 Runner Royal Blue

# Athenia



Motif Black (91/2707)

# Blossom

80% Wool / 20% Nylon  
Woven Axminster

Available in 4.57m, 3.66m,  
2.74m, 1.83m & 0.91m

Suitable for Heavy Wear

*Blossom is a delicate floral woven axminster range inspired by the orient, utilising a warm selection of plain and heather yarns. Gently balancing open ground and pattern, Blossom accomplishes subtle impact through the modest use of accent colours.*

*Covering a spectrum of colour, this range offers neutrals which have current accent colours, modern and contemporary colour combinations as well as traditional tones that reflect the oriental reference.*



Bronze (52/20053)



51/20053 Opal



11/20053 Camellia



52/20053 Bronze



# Boho Collection

80% Wool / 20% Nylon  
Woven Axminster

Available in 4m, 3m, 2m & 1m

Suitable for Heavy Wear

*Boho Collection is the epitome of style. The vintage inspired designs are an ode to all things retro, reworked to create contemporary, practical axminster for the 21st century home.*

*The six designs offer their own quirky personality, brought together by the soft pastel shades of the "heritage" colour palette to create a unique and stunning collection.*



Hamilton Tea Rose (01/30006)

# Bloomsbury



Bloomsbury Summer Breeze (31/30003)



01/30003 Tea Rose



31/30003 Summer Breeze



41/30003 Sunlight

# Boho Collection



Tribe Tea Rose (01/30001)

# Rhapsody



01/30005 Tea Rose



31/30005 Summer Breeze

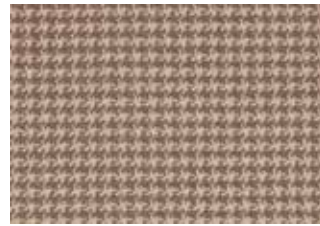


71/30005 Apple Blossom



91/30005 Moon Shimmer

# Chic



01/30002 Tea Rose



31/30002 Summer Breeze



71/30002 Apple Blossom



11/30002 Honesty



91/30002 Moon Shimmer

# Tribe



Tribe Tea Rose (01/30001)



01/30001 Tea Rose



31/30001 Summer Breeze



71/30001 Apple Blossom

# Boho Collection





# Hemingway



31/30004 Summer Breeze



71/30004 Apple Blossom



11/30004 Honesty



91/30004 Moon Shimmer



Hemingway Apple Blossom (71/30004)

# Hamilton



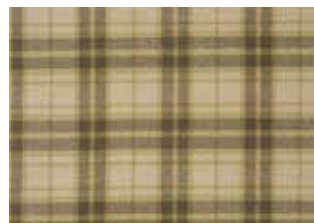
Hamilton Summer Breeze (31/30006)



01/30006 Tea Rose



31/30006 Summer Breeze



71/30006 Apple Blossom



11/30006 Honesty



91/30006 Moon Shimmer

# Braeburn

80% Wool / 20% Nylon  
Woven Axminster

Available in 4.57m, 3.66m,  
2.74m, 1.83m & 0.91m

Suitable for Extra Heavy Wear

*Think British coastlines, wild hedgerows, and vast moorland and you will conjure up a rich of colours. These stunning rural landscapes are the inspiration behind the much anticipated "Braeburn" range.*

*The traditional plaid design has been given a contemporary yet timeless make over with the clever use of rich shades combined with on trend accent colours. The five stunning colourways are sure to become instant style classics as they combine the elegance and integrity of the plaid pattern with the freshness of these fashionable hues.*



91/20084 Estuary



92/20084 Sea Holly



01/20084 Tayberry



72/20084 Myrtle



71/20084 Petrel



Myrtle (72/20084)





# Country House Collection Beaumont

80% Wool / 20% Nylon  
Woven Axminster

Available in 4.57m, 3.66m,  
2.74m, 1.83m & 0.91m

Suitable for Extra Heavy Wear

*Conjuring up images of picnic blankets, kilts and all things woollen and warm, Beaumont is a versatile, stylish and sophisticated plaid range by Ulster.*

*This traditional design has been brought into the 21st Century: subtle tones and carefully placed highlights of colour create a carpet with depth and timeless appeal, in ten beautiful colourways.*

*The Beaumont range captures the essence of the timeless Country House Collection.*



92/20016 Inkstone



93/20016 Granary



94/20016 Cairn



11/20016 Chalk Downs



15/20016 Grouse



91/20016 Turtle Dove



48/20016 Croft Gold



12/20016 Brindle



47/20016 Antique Green

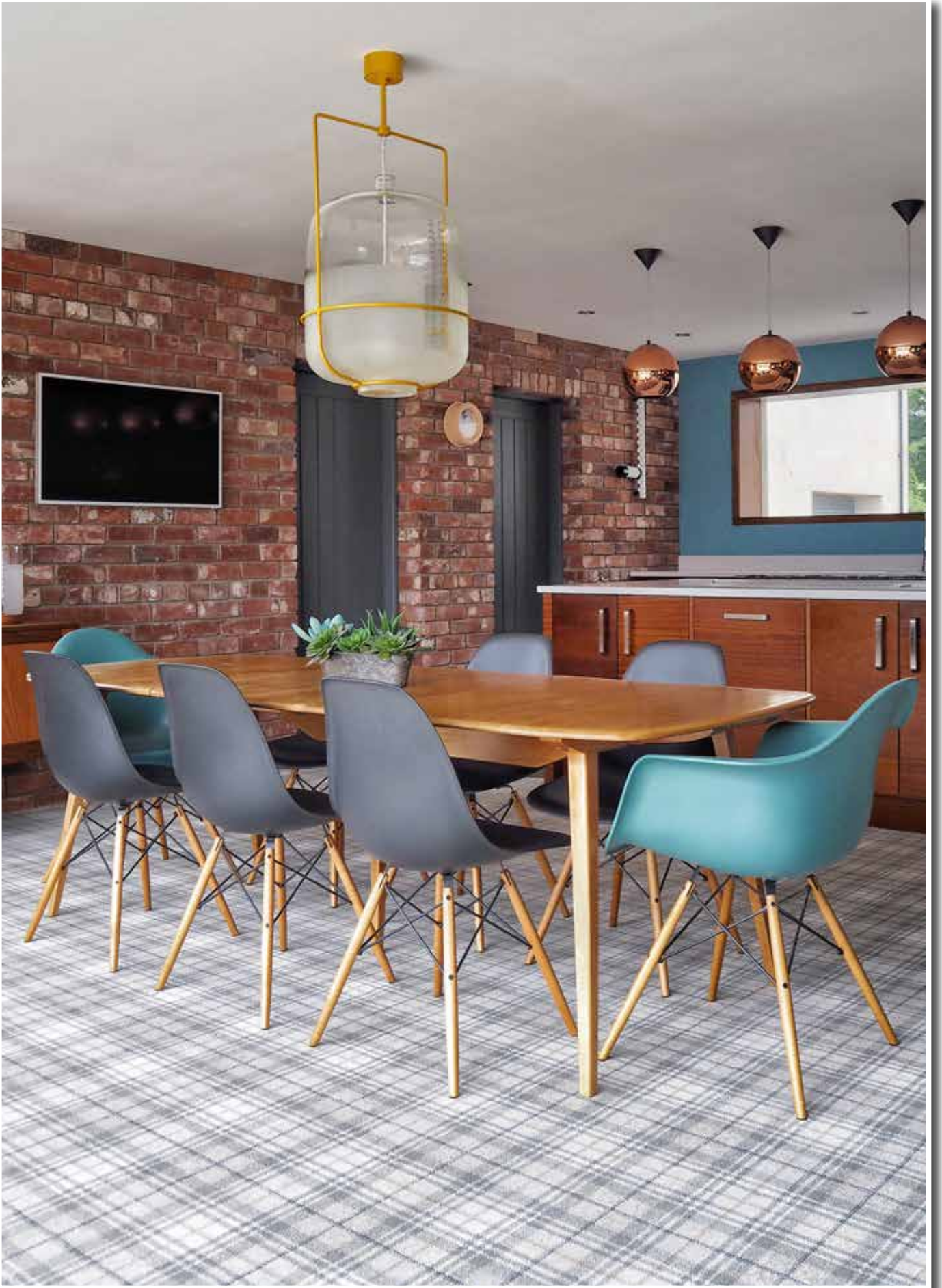


14/20016 Osprey



Cairn (94/20016)





Granary (93/20016)

# Country House Collection Kazan

80% Wool / 20% Nylon  
Woven Axminster

Available in 4.57m, 3.66m,  
2.74m, 1.83m & 0.91m  
Runner 0.91m

Suitable for Extra Heavy Wear

*Kazan, an opulent antique Persian design with co-ordinating runner, is now available in three sophisticated colourways, from the classical to the more contemporary.*

*Woven in a soft yet hardwearing 80% wool / 20% nylon yarn blend, this axminster range is the ideal choice for consumers who want to create instant grandeur in the home.*



51/20018 Sepia



51/20019 Sepia Runner



41/20018 Persian Gold



41/20019 Persian Gold Runner



91/20018 Tench Green



91/20019 Tench Green Runner



Beaumont Antique Green (47/20016) & Kazan Tench Green (91/20018)



Kazan Tench Green (91/20018) & Runner (91/20019)



# Watercolours

80% Wool / 20% Nylon  
Woven Axminster

Available in 4.57m, 3.66m,  
2.74m, 1.83m & 0.91m

Suitable for Extra Heavy Wear

*Inspired by natural landscapes and the abstract masterpieces of JW Turner - "Watercolours" mimics washes of watercolour pigment softly blending into the paper.*

*Two designs 'Amulet' and 'Mineral' are available in five exciting colour ways echoing natural elements.*



Amulet Seaglass (91/20092)

## Amulet



91/20092 Seaglass



92/20093 Atmosphere



93/20094 Alchemy



12/20091 Brimstone



11/20090 Ombre

# Mineral



91/20089 Seaglass



92/20089 Atmosphere



93/20089 Alchemy



12/20089 Brimstone



11/20089 Ombre



Mineral Alchemy (93/20089)



# Glenavy

80% Wool / 20% Nylon  
Woven Axminster

Available in 4.57m, 3.66m,  
2.74m, 1.83m & 0.91m  
Runner 0.91m

Suitable for Heavy Wear

*Each carpet design in the Glenavy range is individually inspired and designed. The diversity and elegance of each design offers limitless possibilities in their application.*

*The beautiful mix of traditional patterns within the Glenavy range instinctively creates character and charm.*

*\*Co-ordinating runners available, please see the back of the retailer reference guide.*



Kilim (81/2055)\*



1/2467 White Shirzar



11/2970 Romanza



11/2971 Fantasia



7/2984 Hampton Court\*



41/20064 Antique Hampton Court



6/2421 Fezhr



2/2418 Tabriz



6/2414 Mayfayre



6/2474 Siranda



2/2648 Ethnic Panel Rust\*



81/2055 Kilim\*



# Glenavy



17/2045 Seychelles



2/2162 Overture



2/3144 Kashmir



2/2385 Persian



21/2133 Red Persian\*



21/20065 Red Hampton Court



21/2886 Vesuvius



10/2264 Firedance



4/2353 Green Buttons & Bows



4/2452 Green Cameo



5/2432 Blue Cameo

# Glendun

80% Wool / 20% Nylon  
Woven Axminster

Available in 4.57m, 3.66m,  
2.74m, 1.83m & 0.91m

Suitable for Extra Heavy Wear

*The crème de la crème of Ulster classic designs, Glendun is an elegant collection with a timeless, distinguished look. The five colourways that make up this collection are each suitable for extra heavy wear and designs range from the romantic to the bold.*



1/2431 Canterbury



11/20063 Rosemoor



5/2380 Blue Lorenzo



5/2446 Blue Caliph



3/2152 Samarkand



Glenay Hampton Court (7/2984)



# Glenmoy

80% Wool / 20% Nylon  
Woven Axminster

Available in 4.57m, 3.66m,  
2.74, 1.83m & 0.91m

Suitable for Extra Heavy Wear

*Glenmoy is a charming collection of fifteen traditionally-patterned woven axminster colourways that exude warmth and integrity.*

*Within this range, delicate pastel designs sit alongside vividly rich, Persian-inspired creations and traditional plaids.*

*Glenmoy, one of Ulster's longest standing woven axminster ranges, is suitable for extra heavy domestic wear and is available in colour matching multi-widths.*



Robertson (91/20082)



6/2470 Madame Pompadour



1/2280 Toledo



4/2371 Green Vivaldi



2/2371 Vivaldi



2/2157 Seville



21/2652 Antique Sunset



10/2160 Persian Garden



21/2650 Red Sultan



91/2650 Black Sultan

# Glenmoy



Douglas (91/20083)

*"...delicate pastel designs sit alongside vividly rich, Persian-inspired creations and traditional plaids."*



91/20083 Douglas



2/2755 Beige Chisholm



10/2754 Royal Stewart



12/2756 Blackwatch



91/20082 Robertson

# Grange Wilton

80% Wool / 20% Nylon  
Woven Wilton

Available in 5m, 4m, 3m, 2m & 1m

Suitable for Extra Heavy Wear

*Combining the luxury of wool and the hardwearing properties of nylon, Grange Wilton uses high twist plain and heather yarns woven tightly to create the ultimate luxurious dense floorcovering.*

*The 30 colourways within Grange Wilton include warm organic mineral tones, soft muted greys, beiges, green and reds, all inspired by a timeless 'heritage' palette.*

*The nostalgic tones and colours found in Grange Wilton will effortlessly help create warmth and deliver practical luxury.*



G1009 Beeswax



G1011 Pantry



G1029 Millstone



G1028 Woburn



G1001 Angora



G1007 Spelt



G1012 Tallow



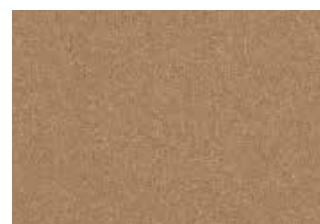
G1013 Romney



G1002 Wattle



G1003 Coir



G1017 Giltwood



G1014 Appleby



Lowry (G1016)



G1026 Seasalt



G1027 Priory



G1030 Cygnet



G1025 Silversmith



G1018 Whisper



G1021 Mist



G1015 Woolsack



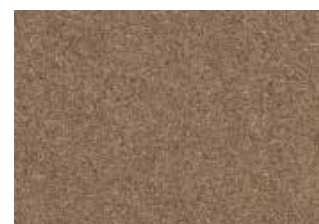
G1022 French Grey



G1004 Flagstone



G1005 Partridge



G1006 Otter



G1008 Moorland



# Grange Wilton



G1019 Greyhound



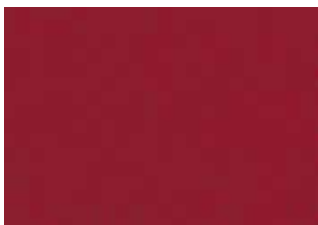
G1016 Lowry



G1020 Brunel



G1024 Kew



G1010 Grenadier Red



G1023 Red Setter



Cygnets (G1030)

# HABITÜS

100% Wool  
Loop Pile

Available in 5m, 4m, 3m, 2m & 1m

Suitable for Heavy Wear

*Drawing on the emotional connection we create with the surrounding elements, HABITÜS blends contemporary patterns and comforting textures with neutral colourways and contains four designs, Urban, Rustik, Croft and Strönd.*



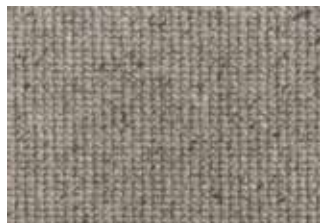
Croft Soya (25/1318)



25/1318 Soya



72/1318 Wren



35/1318 Rye



70/1318 Surf



75/1318 Etching

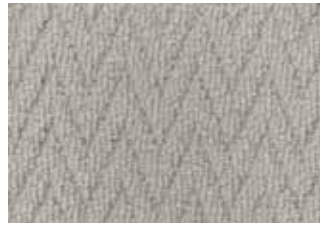


65/1318 Reef

# Urban



70/1445 Air



73/1445 Rain



Rope 35/1446



71/1446 River



72/1446 Wharf



75/1445 Smoke

*"...a collection inspired by the quiet, understated aesthetic found in Danish design"*



Urban Air (70/1445)





Urban Air (70/1445)



# Rustik



70/1440 Air



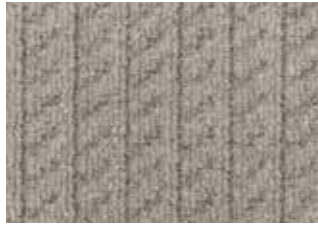
73/1440 Rain



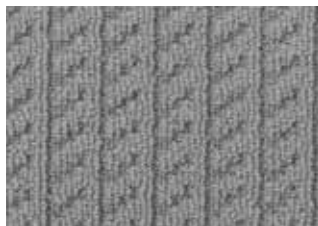
35/1441 Rope



71/1441 River



72/1441 Wharf



75/1440 Smoke



Rustik Rope (35/1441)

# Strönd



Strönd Bay (80/1317)



20/1317 Shoal



35/1317 Shore



70/1317 Sail



75/1317 Pier

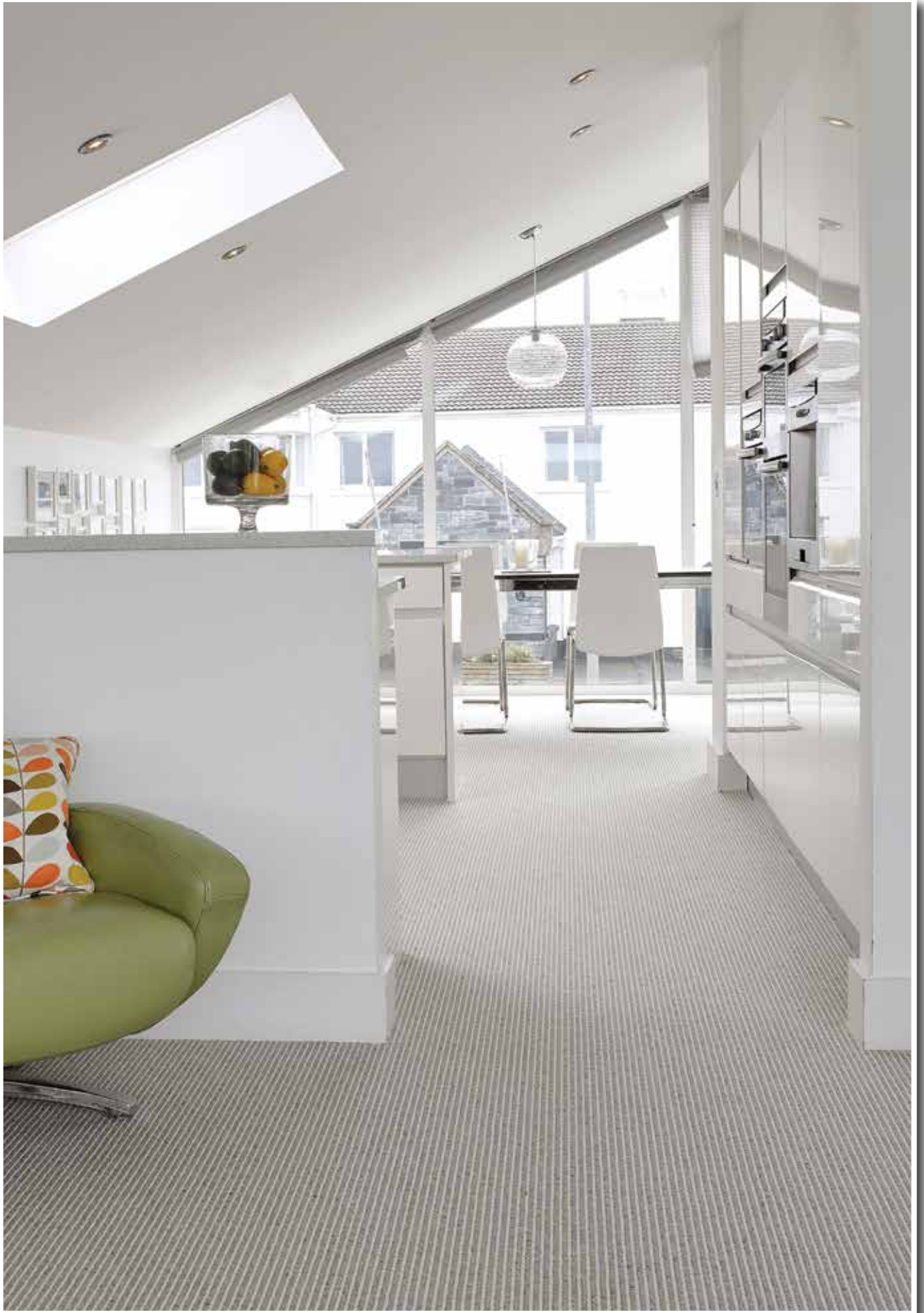


80/1317 Bay



65/1317 Ebb







# Heritage Twist

80% Wool / 20% Nylon

Available in 5m, 4m, 3m, 2m & 1m

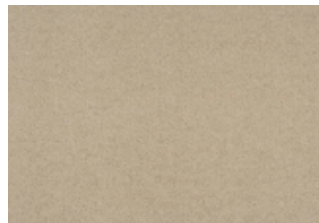
Suitable for Extra Heavy Wear

*Heritage Twist is available in 7 on trend colourways, in a combination of stunning plains and soft heathers, each with subtle vintage tones that offer a nod to the past.*

*An easy-living mix of soft textures, brought together by a sophisticated colour palette, Heritage Twist will effortlessly add to the ambience of a home without compromising on quality and practicality.*



Mimosa (H3306)



H3316 Balsa



H3306 Mimosa



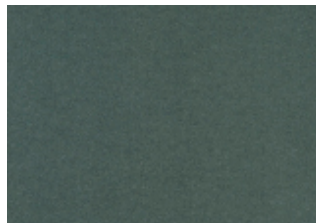
H3304 Nettle



H3307 Tide



H3308 Cascade



H3314 Zinc



H3319 Macaroon

# Natural Choice Axminster

100% Undyed Wool  
Woven Axminster

Available in 4.57m, 3.66m,  
2.74m, 1.83m & 0.91m

## Suitable for Heavy Wear

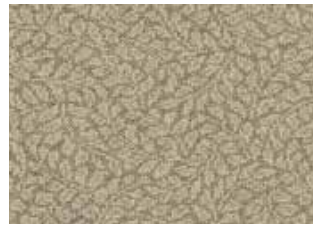
*Recognising a growth in public awareness of environmental and ecological issues, Ulster has developed Natural Choice, an eco friendly collection woven from 100% undyed wool.*

*Natural Choice Axminster is made up of a variety of textural designs, each inspired by nature.*

*Composed from natural, renewable elements, Natural Choice is completely recyclable and biodegradable at the end of its life cycle. It therefore has a minimal effect on the environment.*



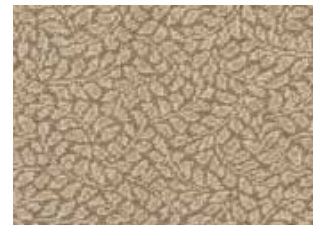
Chenille Fawn (41/20048)



51/20043 Rowan Dove



51/20048 Chenille Dove



41/20043 Rowan Fawn



41/20048 Chenille Fawn



91/20043 Rowan Slate



91/20048 Chenille Slate



41/20045 Fresco Fawn



91/20045 Fresco Slate



11/20042 Garland Natural



41/20047 Cove Fawn



# Natural Choice Plains

100% Undyed Wool  
Woven Wilton

Available in 5m, 4m, 3m, 2m & 1m

Suitable for Heavy Wear

*The Natural Choice Plains range has been specifically designed to complement the Natural Choice Axminster range, offering a complete co-ordinated solution.*

*Woven from 100% natural undyed wool each of the Natural Choice Plains delivers all of the associated benefits of wool in six 'organic' woven wilton colourways.*

*By combining a patterned carpet in one room with the subtly of a plain carpet in another, the consumer can easily create a naturally flowing effect.*



Top to Bottom: Plover (N5002), Eider (N5004), Cobble (N5003) & Alpaca (N5001)



N5004 Eider



N5001 Alpaca



N5002 Plover



N5003 Cobble



N5007 Platinum



N5005 Pumice



# Natural Choice Co-ordination

*Natural Choice Axminster and Plain ranges, as a co-ordinating collection can effortlessly work together in a variety of combinations. When used side by side Natural Choice woven axminster and wilton colourways create a relationship between various internal spaces whilst subtly defining each area. Below are just a few co-ordination options. For a full list, please see the Colour Co-ordination pages at the back of the retailer reference guide.*

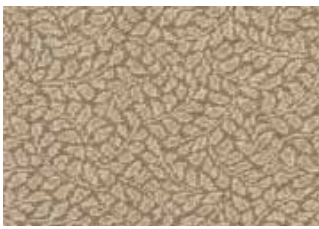


41/20048 Chenille Fawn

+



N5003 Cobble



41/20043 Rowan Fawn

+



N5001 Alpaca



51/20043 Rowan Dove

+



N5007 Platinum



11/20042 Garland Natural

+



N5002 Plover

# Open Spaces

100% Wool

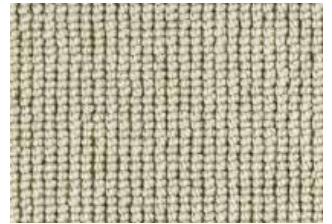
Loop Pile

Available in 5m, 4m, 3m, 2m & 1m

Suitable for Heavy Wear

*Open Spaces is a comprehensive loop pile collection in four different designs; Dubai, Monaco, Panama, Capri and the Laneve ranges; Auckland, Queenstown and Wellington Stripe. Constructed from 100% wool, the Open Spaces Collection delivers a textured contemporary look that is soft, warm and durable.*

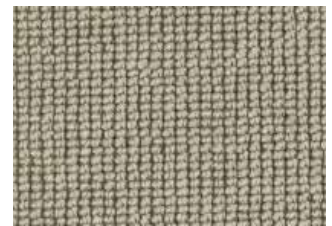
*Open Spaces is offered in an extensive array of organic colours that will merge seamlessly into all interior schemes and co-ordinate with Ulster's extensive woven axminster offering.*



12/1319 Polar



72/1319 Alpine



74/1319 Tor

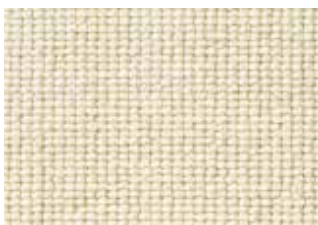


35/1319 Glaze

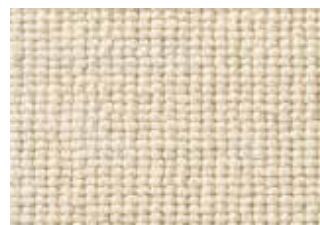


76/1319 Echo

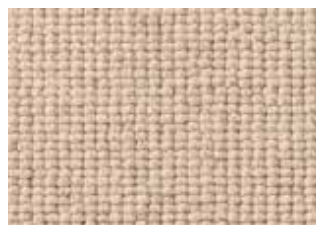
## Dubai



10/1319 Snowdrop



15/1319 Lemongrass



20/1319 Blonde



43/1319 Demerara



31/1319 Pearl



61/1319 Limewash



30/1319 Malt



71/1319 Dapple

# Open Spaces



Dubai Polar (12/1319)

*"...Given the contemporary feel of its loop pile and 100% wool construction, Dubai is a versatile range with broad appeal."*



Capri Parma (72/1173)

## Capri



20/1173 Verdi



10/1173 Bianco



72/1173 Parma



75/1173 Grigio



# Open Spaces

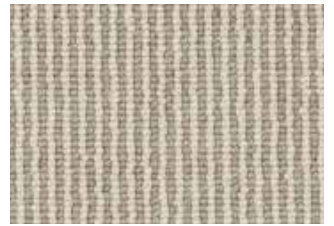
## Monaco



Monaco Gallery (72/1175)



65/1175 Flo



72/1175 Gallery



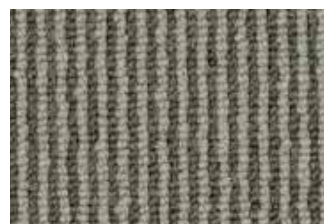
73/1175 Graphic



76/1175 Chrome



77/1175 Aniseed



78/1175 Galaxy

# Open Spaces

## Panama



Panama Quicksilver (70/1170)



10/1170 Bone



20/1170 Loft



30/1170 Gesso



60/1170 Ashen



65/1170 Metro



70/1170 Quicksilver



72/1170 Orbit



75/1170 Mono

# Open Spaces (Laneve)

## Auckland

100% New Zealand Wool

Available in 5m, 4m, 3m, 2m & 1m

Suitable for Heavy Wear



Auckland Mortar (28/1428)

### What is Open Spaces Laneve?

Ulster Carpets, working in partnership with Wools of New Zealand, have developed three 100% New Zealand wool, tufted (loop pile), Laneve ranges - Open Spaces (Laneve) Auckland, Queenstown and Wellington Stripe.

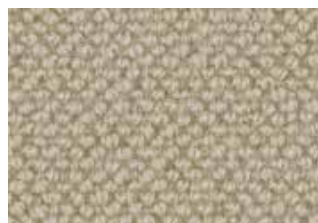
Open Spaces Auckland, a plain rib range, comprises of twelve colourways. Accompanying this is the Open Spaces Queenstown range, a texture two - tone rib also available in fifteen colourways, and Wellington Stripe, a subtle stripe range in four colourways.

Manufactured in Denmark by danfloor (an Ulster Group Company specialising in the manufacture of tufted products), the Open Spaces Auckland, Queenstown and Wellington Stripe ranges utilise a dense loop pile texture to create a natural contemporary floor covering that is also soft and warm.

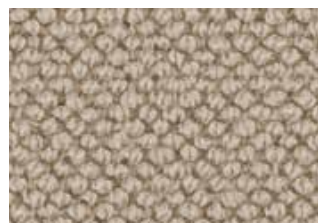
**For more information visit:**  
**[www.woolsnz.com](http://www.woolsnz.com)**



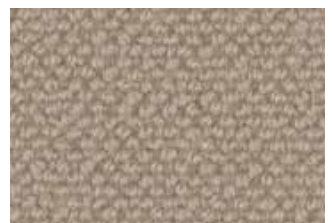
10/1428 Calico



62/1428 Hammock



71/1428 Coast



25/1428 Driftwood

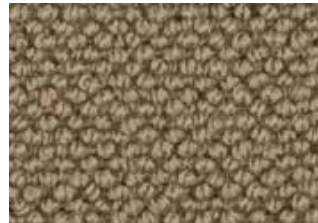


# Open Spaces (Laneve)

## What Does the Brand Represent?

In choosing any of these Wools of New Zealand Laneve products, the consumer is purchasing a luxurious 100% wool carpet, supplied by farmers who must meet a comprehensive range of environmental, social responsibility and animal welfare standards.

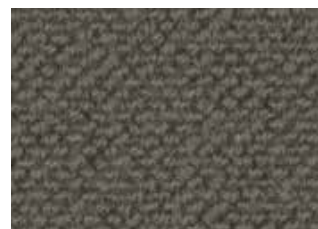
Laneve wool is grown on large farms where the wool is tailored to specific end uses. This allows economies of scale to be achieved in moving and processing the wool, minimising the environmental impact. You can find out more about the farms where the wool is grown on the Wools of New Zealand website.



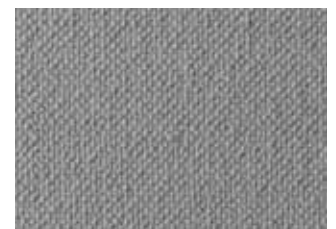
28/1428 Mortar



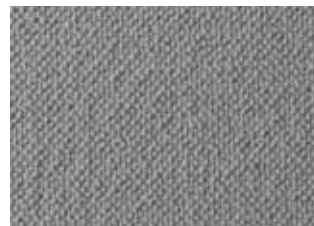
70/1428 Grayling



74/1428 Anvil



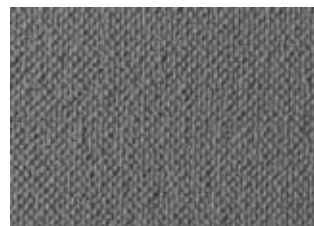
72/1428 Sidewalk



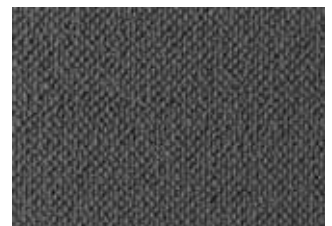
11/1428 Ermine



73/1428 Glint



75/1428 Concrete



76/1428 Paraffin



Auckland Concrete (75/1428)

# Queenstown

100% New Zealand Wool

Available in 5m, 4m, 3m, 2m & 1m

Suitable for Heavy Wear



Queenstown Cadet (76/1431)



20/1431 Crystal Beige



25/1431 Bunting



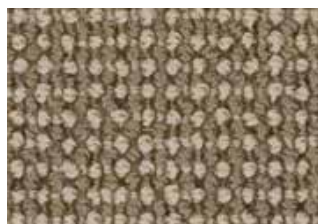
63/1431 Quill



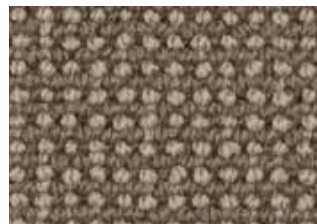
64/1431 Jute



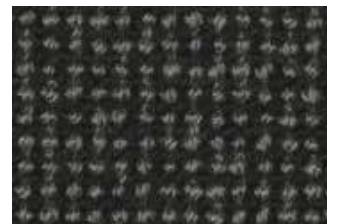
70/1431 Swedish Grey



66/1431 Awning



68/1431 Nova

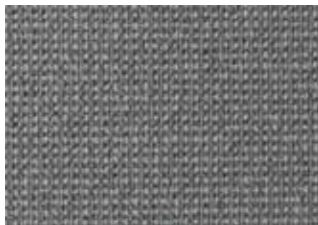


75/1431 Furnace Black





80/1431 Deft



60/1431 Baltic

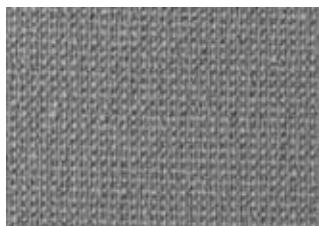


76/1431 Cadet

Queenstown Baltic (60/1431)



77/1431 Ink



71/1431 Gull



72/1431 Urban



73/1431 Whale



# Open Spaces (Laneve)

## Wellington Stripe

100% New Zealand Wool

Available in 5m, 4m, 3m, 2m & 1m

Suitable for Heavy Wear



40/1433 Linnet



20/1433 Reed



10/1433 Quay



60/1433 Carbon



Wellington Stripe Reed (20/1433)

# Open Spaces (Laneve)



# Sheriden

80% Wool / 20% Nylon  
Woven Axminster

Available in 4.57m, 3.66m,  
2.74, 1.83m & 0.91m  
Runner 0.69m

## Suitable for Extra Heavy Wear

*Sheriden is a classical collection that offers ten colourways in three co-ordinating cameo, pindot and runner designs.*

*This range provides consumers with the opportunity to create a simple, elegant, stylish and flowing interior when any combination of the three Sheriden designs is chosen.*

*The extensive colour palette ranges from soft tones to stronger regal colours, for those who want to make the ultimate style statement.*



Cameo Bordeaux (22/2614), Runner Bordeaux (22/2576)  
& Pindot Bordeaux (22/2562)



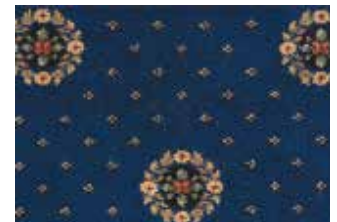
45/2461 Cameo Jade



45/2462 Pindot Jade



45/2605 Runner Jade



52/2461 Cameo Royal Blue



52/2462 Pindot Royal Blue



52/2605 Runner Royal Blue



# Sheriden



42/2558 Cameo Provencale



13/2558 Cameo Regency Cream



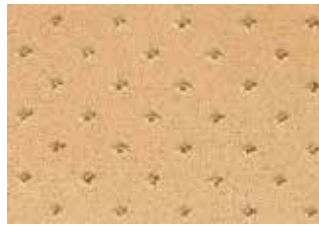
43/2617 Cameo Florence Gold



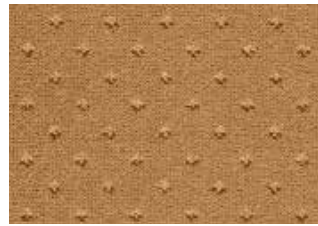
51/2558 Cameo Downton



42/2562 Pindot Provencale



13/2562 Pindot Regency Cream



43/2562 Pindot Florence Gold



51/2562 Pindot Downton



42/2574 Runner Provencale



13/2574 Runner Regency Cream



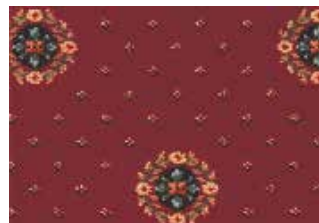
43/2622 Runner Florence Gold



51/2574 Runner Downton



73/2461 Cameo Claret



10/2461 Cameo Royal Red



22/2614 Cameo Bordeaux



73/2462 Pindot Claret



10/2462 Pindot Royal Red



22/2562 Pindot Bordeaux



73/2605 Runner Claret



10/2605 Runner Royal Red



22/2576 Runner Bordeaux

# Sheriden



Carneo Provencale (42/2558)

# Tazmin

80% Wool / 20% Nylon  
Woven Axminster

Available in 4.57m, 3.66m,  
2.74, 1.83m & 0.91m  
Runner 0.69m

## Suitable for Heavy Wear

*Distinguishable by its simple diamond motif design which is accentuated by a plain or heather background, Tazmin is a stylish and contemporary range.*

*Available in three co-ordinating designs - motif, pindot and runner - Tazmin offers the versatility and choice that consumers have come to expect from Ulster.*

*One design can be chosen to make a statement or the motif, pindot and runner options can be used in any combination to achieve a beautiful co-ordinated look.*



41/2628 Motif Sand



11/2628 Motif Camel



41/2724 Pindot Sand



11/2724 Pindot Camel



41/2634 Runner Sand



11/2634 Runner Camel



43/2628 Motif Honey



43/2724 Pindot Honey



43/2716 Runner Honey



Motif Camel (11/2628)



# Tazmin



Motif Forest (72/2710)



53/2628 Motif Kaftan



52/2628 Motif Umber



91/2628 Motif Shadow



72/2710 Motif Forest



53/2724 Pindot Kaftan



52/2724 Pindot Umber



91/2724 Pindot Shadow



72/2724 Pindot Forest



53/2716 Runner Kaftan



52/2634 Runner Umber



91/2634 Runner Shadow



72/2718 Runner Forest

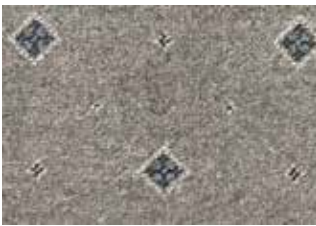
# Tazmin



93/2628 Motif Buckram



93/2724 Pindot Buckram



92/2628 Motif Blue Grass



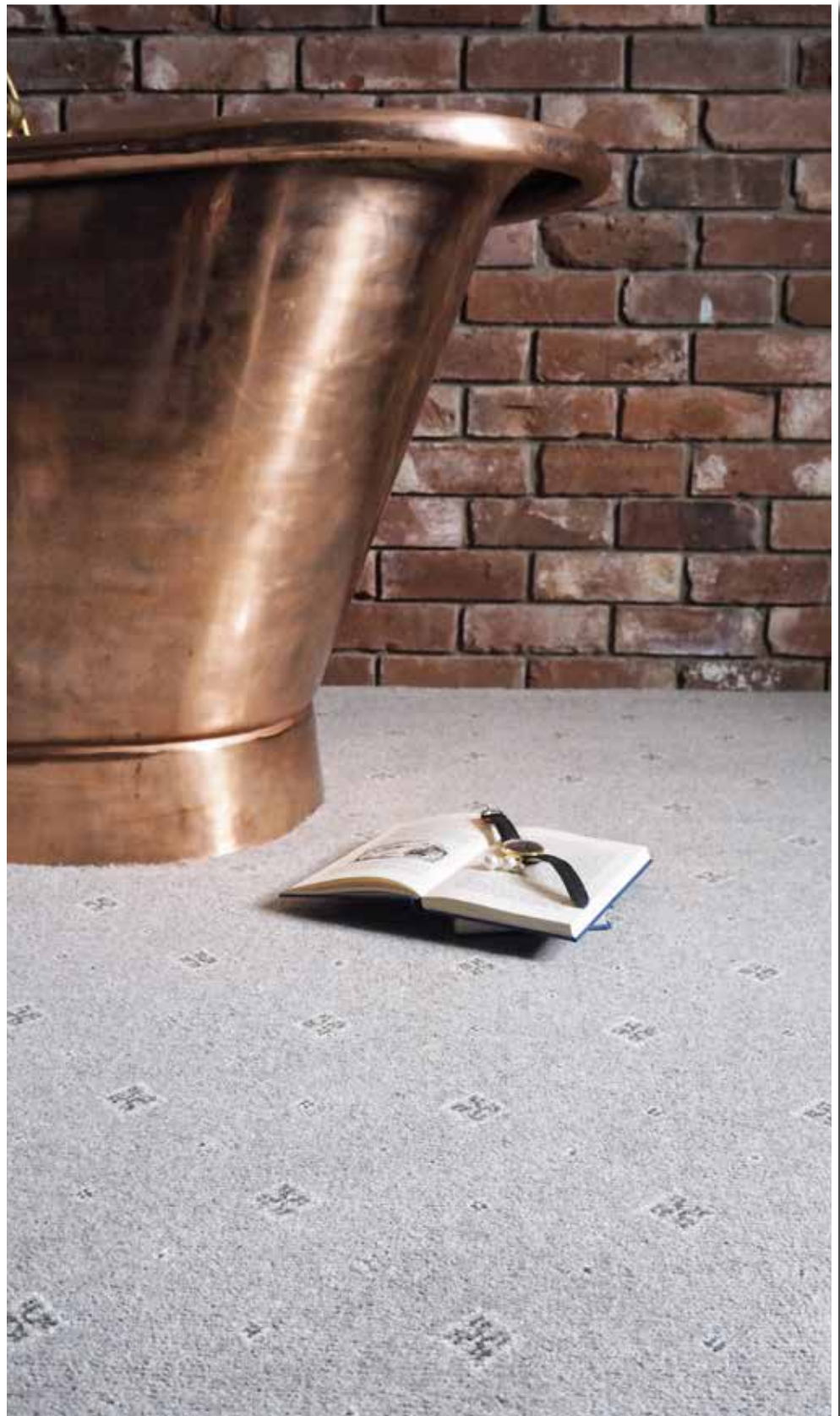
92/2724 Pindot Blue Grass



31/2628 Motif Prussian



31/2724 Pindot Prussian



Motif Buckram (93/2628)



# Tazmin



Motif Blue Grass (92/2628)



# Tazmin



Motif Shadow (91/2628)



21/2628 Motif Crimson



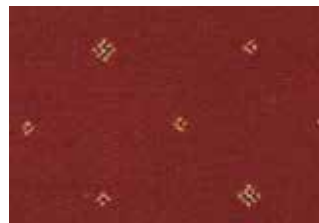
23/2628 Motif Sienna



10/2628 Motif Red



21/2724 Pindot Crimson



23/2724 Pindot Sienna



10/2724 Pindot Red



21/2634 Runner Crimson



23/2634 Runner Sienna



10/2634 Runner Red

# Ulster Velvet

80% Wool / 20% Nylon  
Woven Wilton

Available in 5m, 4m, 3m, 2m & 1m

Suitable for Extra Heavy Wear

*One of the finest wilton products on the market, Ulster Velvet is a luxurious wool-rich flooring. This range looks and feels as its name suggests: smooth, with a texture akin to velvet.*

*In response to the consumer demand for plain carpets, particularly neutral colours, the Ulster Velvet range will harmonise and co-ordinate with almost any interior scheme.*



W2918 Merino



W2619 Impala



W2620 Chinchilla



W2621 Tankard



W2622 Elephant



W2015 Suede



W2016 Linen



W2014 Putty



W2013 Oatmeal



W2615 Mead



W2614 Mullion



W2616 Cloister



W2613 Dovecote



W9209 Canvas



W2022 Pebble



W2603 Mocha



W2617 Mushroom



Fauna (W2607)



W2023 Straw



W9702 Pyramid



W8618 Honey Gold



W2605 Jersey



W2607 Fauna



W837 Champagne



W838 Camel



W2012 Mouse



W8830 Imperial Red



W9711 Burgundy



# Ulster Velvet



W8625 Aspen Green



W835 Jade



W9718 Charcoal



W8313 Windsor Blue



W9203 Royal Blue



Imperial Red (W8830)

# York Wilton

80% Wool / 20% Nylon  
Woven Wilton

Available in 5m, 4m, 3m, 2m & 1m

## Suitable for Extra Heavy Wear

*York Wilton offers a comprehensive palette of 50 colours in an array of plain and heather yarns, with gently-textured twists conveying a simple yet classic style.*

*The heathers add a softer, contemporary feel to the range by blending more than one colour into the twist.*

*Combining the softness, comfort and warmth of wool with the hard-wearing properties of nylon for optimal performance, York Wilton is suitable for extra heavy wear.*

*The diversity of York Wilton's extensive colour palette allows for co-ordination with Ulster's wide range of woven axminsters.*



Y1021 Flax



Y1057 Flannel



Y1035 Sailcloth



Y1009 Rice



Y1030 Hemp



Y1056 Cotswold



Y1047 Parchment

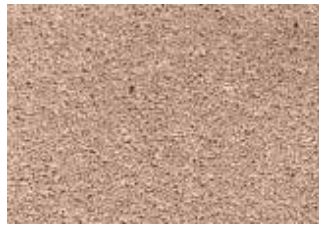


Y1046 Peppercorn



Pavilion (Y1053)

# York Wilton



Y1008 Doeskin



Y1006 Brown Bear



Y1032 Flint



Y1007 Wholemeal



Y1045 Granola



Y1023 Mineral



Y1044 Hazelnut



Hazelnut (Y1044)



# York Wilton



Hemp (Y1030)



Y1013 Irish Cream



Y1012 Corn



Y1048 Sahara



Y1038 Linseed



Y1011 Gorse



Y1037 Safari



Y1029 Walnut



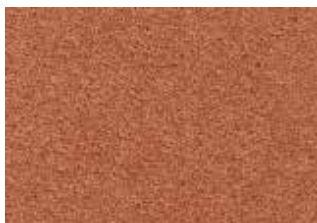
Y1026 Harvest Gold



Y1010 Old Gold



Y1043 Brandysnap



Y1015 Iron Ore



Y1027 Brick



Y1019 Red Earth



Y1042 Matador



Y1014 Redcurrant



Y1041 Shiraz



Meadow (Y1001)



Y1054 Gainsborough



Y1052 Cuckoo



Y1055 Squirrel



Y1064 Mockingbird



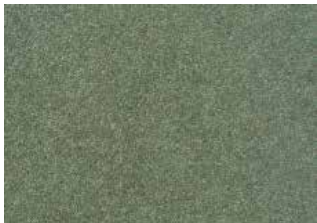
Y1040 Sorrel



Y1001 Meadow



Y1004 Kale



Y1049 Spruce



Y1002 Sage



Y1053 Pavilion



Y1063 Goose



Y1062 Orkney



Y1059 Shetland



Y1060 Chambray



Y1058 Nougat



Y1051 Heron



Y1050 Pewter



Y1061 Indigo



Y1018 America Blue



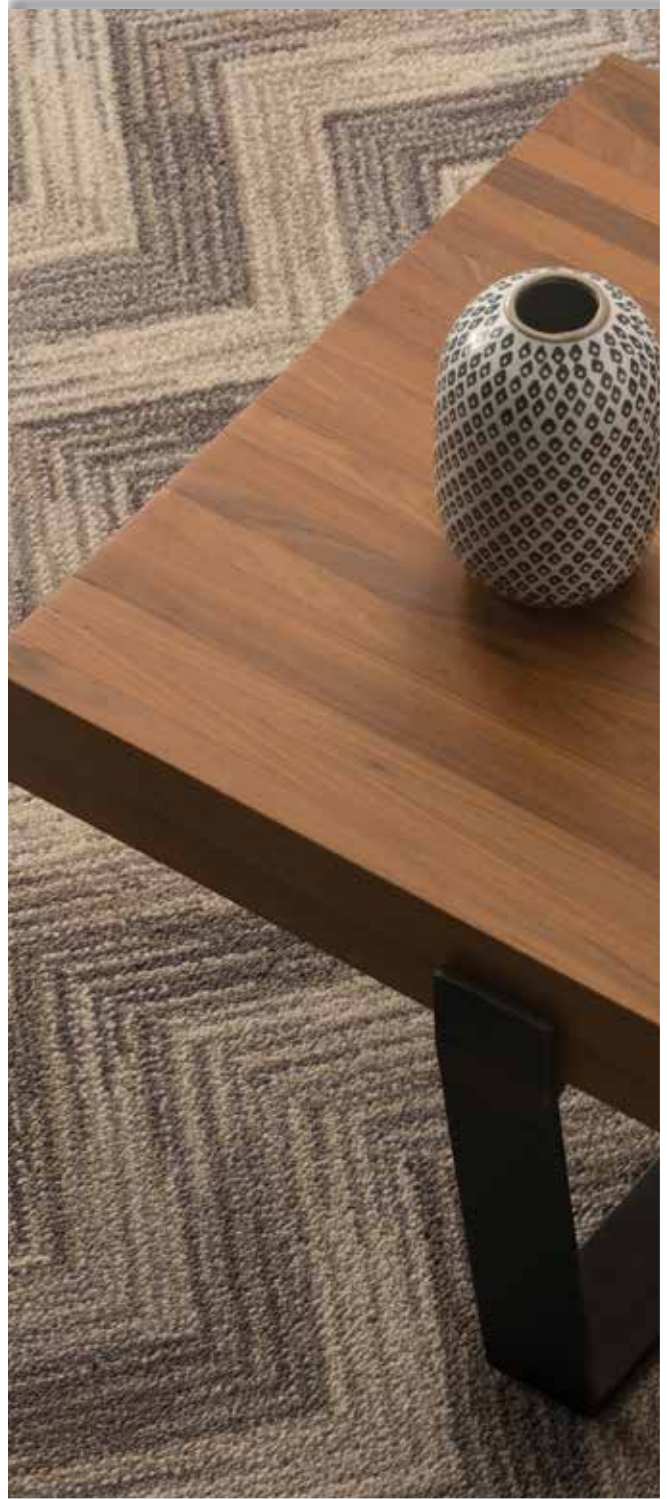
# Fusion

80% Wool / 20% Nylon  
Woven Axminster

Available in 4m

Suitable for Extra Heavy Wear

*As the name suggests, the inspiration for this range is a fusion of rediscovered classic designs that have a resonance in many different areas of interior design. The chevron 'Reverb' has roots in architecture, parquet flooring and embroidery, the dogtooth design 'Tone' originates from tweed fabrics and is a staple of both furnishings and haute couture, while 'Sonic' echoes ikat textiles and slub yarn designs.*



Fusion Reverb Marquee (11/20088)



# Fusion

## Tone



92/20086 Tungsten



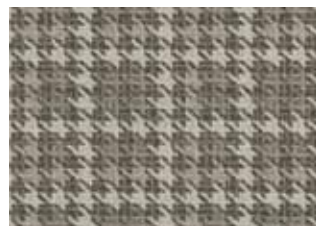
Tone Tungsten (92/20086)



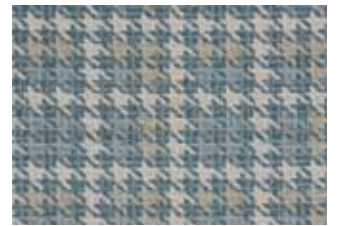
32/20086 Denim



11/20086 Marquee



91/20086 Alloy



31/20086 Electric

*"...The Fusion designs maintain their familiarity but have been re visited to have a completely modern feel with blues, greys and neutrals that are perfect for current colouring, while the scale of the bold designs are tempered by the use of texture which accentuates the softness and practicality of the axminster pile. "*

# Fusion

## Reverb

*"... 'Fusion' is a unique range with striking patterns and colourways, designed to make an impact."*



Reverb Marquee ( 11/20088)



92/20088 Tungsten



32/20088 Denim



11/20088 Marquee



91/20088 Alloy



31/20088 Electric



# Fusion

## Sonic



Sonic Denim 32/20087



92/20087 Tungsten



32/20087 Denim



11/20087 Marquee



91/20087 Alloy



31/20087 Electric



# the mix

80% Wool / 20% Nylon  
Woven Axminster

Available in 4m wide

Suitable for Extra Heavy Wear/  
Heavy Contract Wear

*the mix is a unique woven axminster collection that includes eight contemporary designs offering a total of twenty one different colourways, each available in 4m wide.*

*The stylish designs range from the subtle to the dramatic; the attractive colour palette creates instant appeal.*

*the mix range also co-ordinates with our plain woven wilton and axminster carpets.*



Silhouette Dusk (101637-1)

## Strata



86604-8 Stone

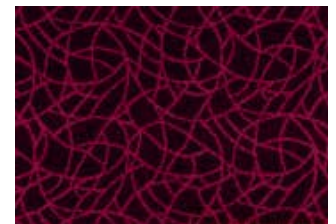
## Crackle



86551-7 Mole



86604-10 Buffalo



86839-2 Cranberry

## Swirl



86440-10 Linum



86440-27 Peacock



86440-11 Berry



86440-14 Panther

## Silhouette



101637-1 Dusk



Strata Stone (86604-8)



Contour Taupe (83982-6)

### Contour



83982-6 Taupe

### Freedom



86169-10 Oyster

### Bloom



100690-2 Serenity

### Shimmer



101000-1 Drift



83982-18 Fossil



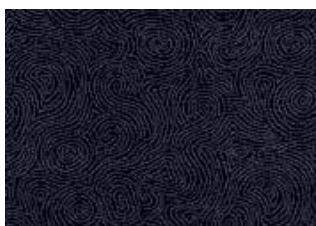
86169-4 Ash



101371-1 Mystique



101000-6 Cherry



83982-4 Graphite



86169-1 Slate



101368-1 Moonlight



101000-3 Mulberry





# Runners

*Ulster provides a wide selection of woven axminster runners in designs that range from the traditional to the contemporary.*

*Available in 0.69m or 0.91m wide, a runner is the perfect way to continue a co-ordinated look throughout the home and over various levels.*

*Alternatively runners can be used independently to create a statement on a stairway or along a corridor.*



Anatolia Runner Dune (41/2289)

## Anatolia (0.69m wide)



42/2289 Lotus



41/2289 Dune



43/2289 Tunis



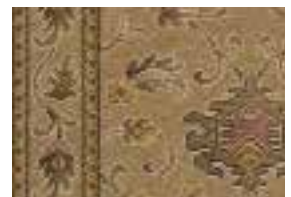
11/2289 Delta



44/2289 Nile Gold



52/2289 Luxor



72/2289 Isis



81/2299 Fez

For those consumers who wish to use the medallion design on their staircase, please be advised that the medallion element is not centralised within the overall design. To counteract this, we recommend the following;

- Use the runner design, as the medallion is centrally positioned
- The versatility and even distribution of the scroll design sits perfectly on a staircase

Alternatively, if neither of these options are applicable, a 1.83m wide cut will be needed from which the required width will be cut to ensure the medallion is centred. Ulster Carpets is not responsible for the subsequent extra cost.

Athenia (0.69m wide)



10/2583 Red



45/2583 Pale Green



4/2583 Green



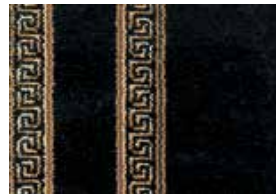
9/2583 Turquoise



12/2583 Royal Blue



22/2583 Wine



91/2711 Black

Country House Kazan (0.91m wide)



91/20019 Tench Green



41/20019 Persian Gold



51/20019 Sepia



Kazan Runner Tench Green (91/20019)



Glenavy (0.91m wide)



11/2136 Hampton Court



21/2135 Red Persian



81/2138 Kilim



01/2137 Ethnic Panel Rust

Sheriden (0.69m wide)



42/2574 Provencale



13/2574 Regency Cream



43/2622 Florence Gold



51/2574 Downton



45/2605 Jade



10/2605 Royal Red



73/2605 Claret



22/2576 Bordeaux



52/2605 Royal Blue

Tazmin (0.69m wide)



11/2634 Camel

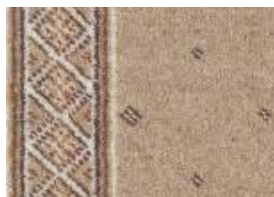
*"...Visually stunning on a staircase, a runner is an instant style statement."*



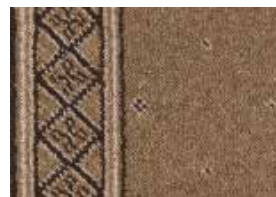
41/2634 Sand



43/2716 Honey



53/2716 Kaftan



52/2634 Umber



91/2634 Shadow



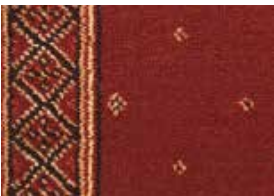
72/2718 Forest



21/2634 Crimson



10/2634 Red



23/2634 Sienna

To view the co-ordinating designs and colourways available for each of the runners featured within this section please see the relevant range pages below.

Anatolia	6 - 8
Athenia	9 - 11
Country House Kazan	22 - 23
Glenavy	26 - 27
Sheriden	54 - 56
Tazmin	57 - 61



Tazmin Motif Buckram (93/2628)





# Colour Co-ordination

*The sheer volume of products on the market can make the job of co-ordinating your carpets seem like an endless and often overwhelming task.*

*Our recently launched ranges have been designed to co-ordinate beautifully with our magnificent selection of plain carpets.*

*The following pages include just some of our favourite product combinations designed to provide inspiration and guidance on how to create an Ulster scheme which flows from room to room.*

*For a full list of co-ordination options please visit [www.ulstercarpets.com/residential](http://www.ulstercarpets.com/residential) and look for the Colour Co-ordination section under 'Choosing your Carpet'.*



Top to Bottom: Natural Choice Eider (N5004), Rowan Fawn (41/20043), Plover (N5002) & Cove Fawn (41/20047)

## Anatolia



42/2287 Medallion Lotus p.6



43/1319 Dubai Demerara p.44



W2607 Ulster Velvet Fauna p.63



Y1007 York Wilton Wholemeal p.66



41/2287 Medallion Dune p.6



43/1319 Dubai Demerara p.44



Y1040 York Wilton Sorrel p.68



Y1029 York Wilton Walnut p.67

# Anatolia



44/2287 Medallion Nile Gold p.7



W9702 Ulster Velvet Pyramid p.63



Y1037 York Wilton Safari p.67



43/2287 Medallion Tunis p.7



W2023 Ulster Velvet Straw p.63



Y1048 York Wilton Sahara p.67



Y1037 York Wilton Safari p.67



11/2287 Medallion Delta p.7



N5001 Natural Choice Alpaca p.42



64/1431 Queenstown Jute p.50



N5003 Natural Choice Cobble p.42



81/2293 Medallion Fez p.7



W8618 Ulster Velvet Honey Gold p.63



Y1037 York Wilton Safari p.67



52/2287 Medallion Luxor p.7



W2013 Ulster Velvet Oatmeal p.62



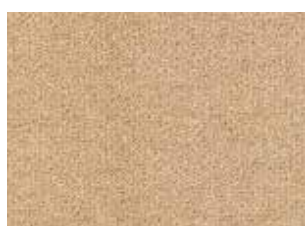
N5002 Natural Choice Plover p.42



G1002 Grange Wilton Wattle p.31



72/2287 Medallion Isis p.7



W2023 Ulster Velvet Straw p.63



W2607 Ulster Velvet Fauna p.63



Y1023 York Wilton Mineral p.66

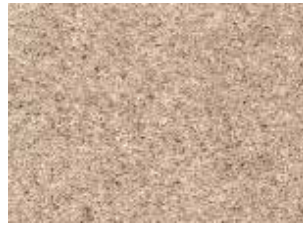
# Blossom



11/20053 Blossom Camella p.12



W2605 Ulster Velvet Jersey p.63



Y1030 York Wilton Hemp p.65



N5002 Natural Choice Plover p.42



# Boho Collection



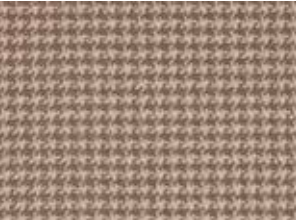
31/30003 Bloomsbury Summer Breeze p.13



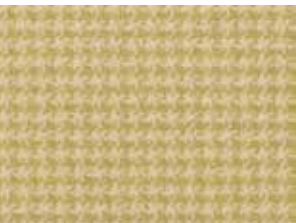
41/30003 Bloomsbury Sunlight p.13



31/30002 Chic Summer Breeze p.15



01/30002 Chic Tea Rose p.15



71/30002 Chic Apple Blossom p.15



G1029 Grange Wilton Millstone p.31



G1013 Grange Wilton Romney p.31



Y1046 York Wilton Peppercorn p.65



H3316 Heritage Twist Balsa p.40



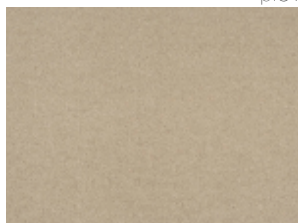
G1009 Grange Wilton Beeswax p.31



G1029 Grange Wilton Millstone p.31



G1009 Grange Wilton Beeswax p.31

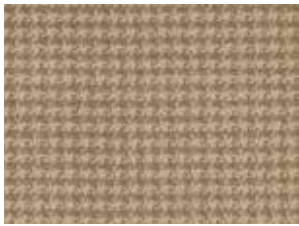


H3316 Heritage Twist Balsa p.40



G1009 Grange Wilton Beeswax p.31

# Boho Collection



11/30002 Chic Honesty p.15



91/30002 Chic Moon Shimmer p.15



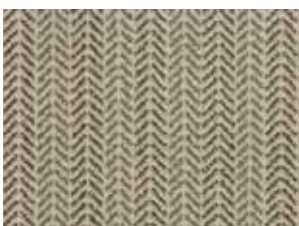
31/30004 Hemingway Summer Breeze p.17



71/30004 Hemingway Apple Blossom p.17



11/30004 Hemingway Honesty p.17



91/30004 Hemingway Moon Shimmer p.17



G1028 Grange Wilton Woburn p.31



H3316 Heritage Twist Balsa p.40



H3316 Heritage Twist Balsa p.40



H3316 Heritage Twist Balsa p.40



H3316 Heritage Twist Balsa p.40



G1009 Grange Wilton Beeswax p.31



G1009 Grange Wilton Beeswax p.31



G1009 Grange Wilton Beeswax p.31



G1029 Grange Wilton Millstone p.31



G1009 Grange Wilton Beeswax p.31



G1009 Grange Wilton Beeswax p.31



G1025 Grange Wilton Silversmith p.32



G1028 Grange Wilton Woburn p.31



G1029 Grange Wilton Millstone p.31



G1028 Grange Wilton Woburn p.31

# Boho Collection



31/30001 Tribe Summer Breeze p.15



01/30001 Tribe Tea Rose p.15



71/30001 Tribe Apple Blossom p.15



31/30005 Rhapsody Summer Breeze p.15



01/30005 Rhapsody Tea Rose p.15



71/30005 Rhapsody Apple Blossom p.15



H3316 Heritage Twist Balsa p.40



H3316 Heritage Twist Balsa p.40



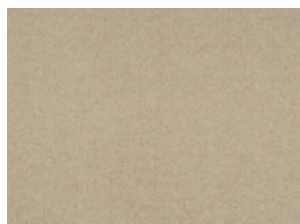
H3316 Heritage Twist Balsa p.40



H3316 Heritage Twist Balsa p.40



H3316 Heritage Twist Balsa p.40



H3316 Heritage Twist Balsa p.40



G1028 Grange Wilton Woburn p.31



G1009 Grange Wilton Beeswax p.31



G1009 Grange Wilton Beeswax p.31



G1009 Grange Wilton Beeswax p.31



G1013 Grange Wilton Romney p.31



# Boho Collection



91/30005 Rhapsody Moon Shimmer p.15



31/30006 Hamilton Summer Breeze p.17



01/30006 Hamilton Tea Rose p.17



71/30006 Hamilton Apple Blossom p.17



11/30006 Hamilton Honesty p.17



91/30006 Hamilton Moon Shimmer p.17



G1009 Grange Wilton Beeswax p.31



H3316 Heritage Twist Balsa p.40



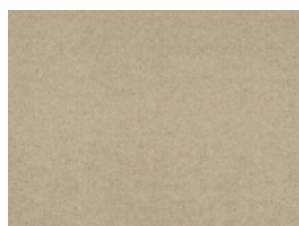
H3316 Heritage Twist Balsa p.40



G1009 Grange Wilton Beeswax p.31



H3316 Heritage Twist Balsa p.40



H3316 Heritage Twist Balsa p.40



G1025 Grange Wilton Silversmith p.32



G1009 Grange Wilton Beeswax p.31



G1009 Grange Wilton Beeswax p.31



G1029 Grange Wilton Millstone p.31



G1009 Grange Wilton Beeswax p.31



G1013 Grange Wilton Romney p.31

# Braeburn



91/20084 Braeburn Estuary p.18



92/20084 Braeburn Sea Holly p.18



01/20084 Braeburn Tayberry p.18



72/20084 Braeburn Myrtle p.18



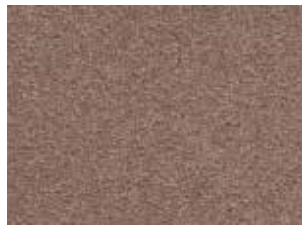
G1021 Grange Wilton Mist p.32



Y1051 York Wilton Heron p.68



G1021 Grange Wilton Mist p.32



Y1032 York Wilton Flint p.66



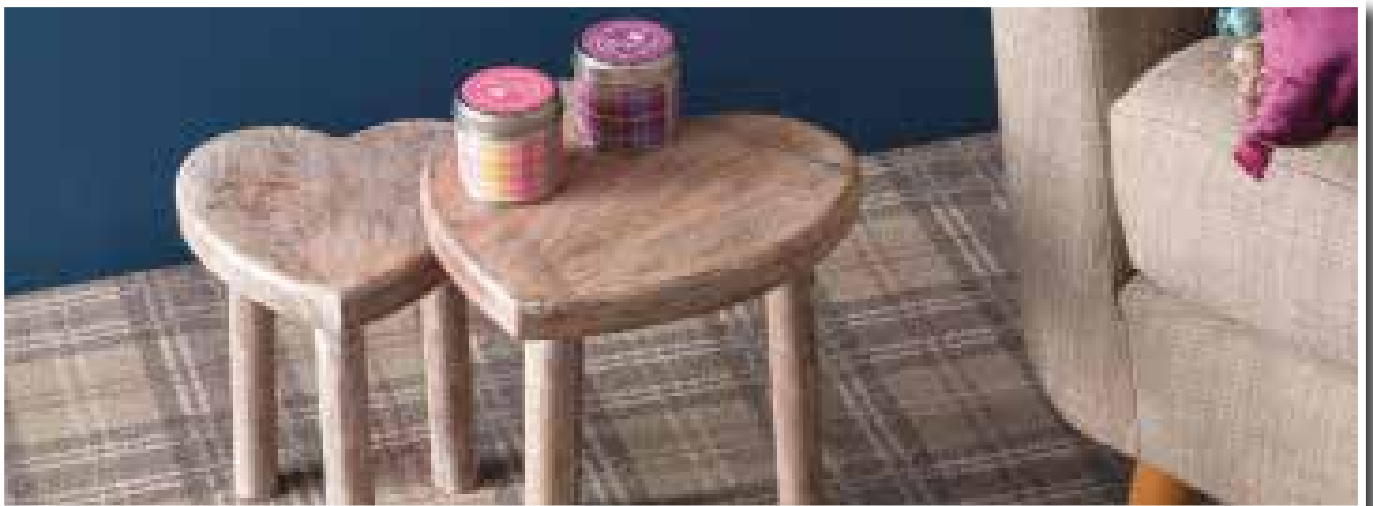
W2012 Ulster Velvet Mouse p.63



W2617 Ulster Velvet Mushroom p.62



G1008 Grange Wilton Moorland p.32



Braeburn Estuary (91/20084)

# Country House Beaumont



11/20016 Beaumont Chalk Downs p.20



14/20016 Beaumont Osprey p.20



91/20016 Beaumont Turtle Dove p.20



12/20016 Beaumont Brindle p.20



48/20016 Beaumont Croft Gold p.20



47/20016 Beaumont Antique Green p.20



G1013 Grange Wilton Romney p.31



G1007 Grange Wilton Spelt p.31



Y1047 York Wilton Parchment p.65



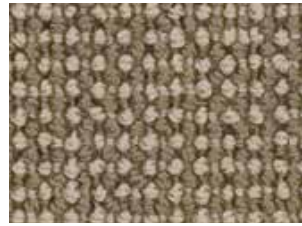
G1013 Grange Wilton Romney p.31



W8618 Ulster Velvet Honey Gold p.63



W8618 Ulster Velvet Honey Gold p.63



66/1431 Queenstown Awning p.50



N5003 Natural Choice Cobble p.42



G1004 Grange Wilton Flagstone p.32



G1015 Grange Wilton Woolsack p.32



Y1037 York Wilton Safari p.67



N5005 Natural Choice Pumice p.42



Y1027 York Wilton Brick p.67





15/20016 Beaumont Grouse  
p.20



G1017 Grange Wilton Giltwood  
p.31



Braeburn Forge

## Country House Kazan



51/20018 Kazan Sepia p.22



43/1319 Dubai Demerara p.44



N5002 Natural Choice Plover p.42



W2607 Ulster Velvet Fauna p.63



91/20018 Kazan Tench Green  
p.22



Y1037 York Wilton Safari p.67



41/20018 Kazan Persian Gold  
p.22



Y1037 York Wilton Safari p.67

# Glenavy



6/2474 Glenavy Siranda p.26



2/2648 Glenavy Ethnic Panel Rust p.26



2/3144 Glenavy Kashmir p.27



11/2971 Glenavy Fantasia p.26



7/2984 Glenavy Hampton Court p.26



11/2970 Glenavy Romanza p.26



Y1032 York Wilton Flint p.66



W837 Ulster Velvet Champagne p.63



Y1010 York Wilton Old Gold p.67



Y1019 York Wilton Red Earth p.67



G1017 Grange Wilton Giltwood p.31



Y1037 York Wilton Safari p.67



G1023 Grange Wilton Red Setter p.33



W2023 Ulster Velvet Straw p.63



G1017 Grange Wilton Giltwood p.31



G1014 Grange Wilton Appleby p.31



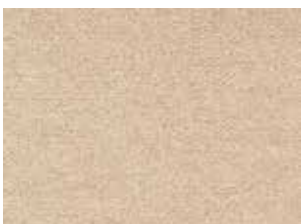
Y1038 York Wilton Linseed p.67



Y1037 York Wilton Safari p.67



Y1049 York Wilton Spruce p.68



W2015 Ulster Velvet Suede p.62



W2013 Ulster Velvet Oatmeal p.62



G1022 Grange Wilton French Grey p.32



# Natural Choice Axminster



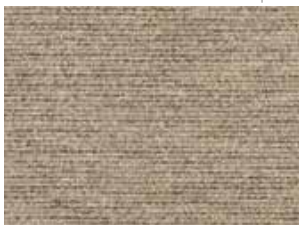
51/20043 Natural Choice Rowan Dove p.41



41/20043 Natural Choice Rowan Fawn p.41



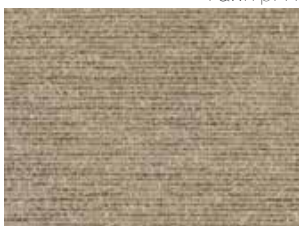
91/20043 Natural Choice Rowan Slate p.41



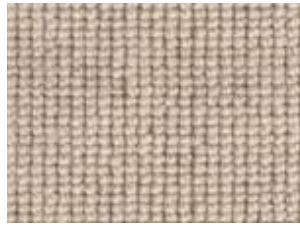
51/20048 Natural Choice Chenille Dove p.41



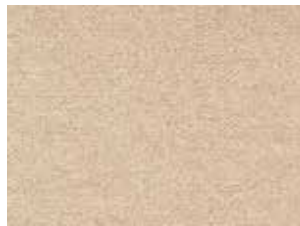
41/20048 Natural Choice Chenille Fawn p.41



91/20048 Natural Choice Chenille Slate p.41



61/1319 Dubai Limewash p.44



W2015 Ulster Velvet Suede p.62



N5005 Natural Choice Pumice p.42



64/1431 Queenstown Jute p.50



G1007 Grange Wilton Spelt p.31



64/1431 Queenstown Jute p.50



N5007 Natural Choice Platinum p.42



N5001 Natural Choice Alpaca p.42



N5007 Natural Choice Platinum p.42



N5007 Natural Choice Platinum p.42



N5003 Natural Choice Cobble p.42



N5005 Natural Choice Pumice p.42



G1015 Grange Wilton Woolsack p.32



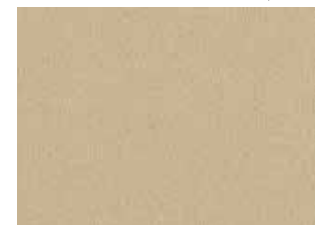
N5003 Natural Choice Cobble p.42



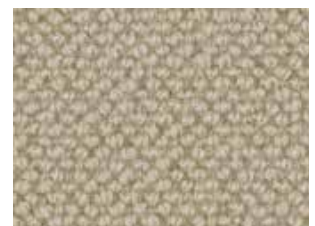
N5005 Natural Choice Pumice p.42



N5005 Natural Choice Pumice p.42



G1011 Grange Wilton Pantry p.31



62/1428 Auckland Hammock p.48



# Natural Choice Axminster



41/20047 Natural Choice Cove  
Fawn p.41



41/20045 Natural Choice Fresco  
Fawn p.41



91/20045 Natural Choice Fresco  
Slate p.41



11/20042 Natural Choice Garland  
Natural p.41



N5001 Natural Choice Alpaca  
p.42



N5001 Natural Choice Alpaca  
p.42



62/1428 Auckland Hammock  
p.48



N5004 Natural Choice Eider p.42



G1007 Grange Wilton Spelt p.31



G1007 Grange Wilton Spelt p.31



N5005 Natural Choice Pumice  
p.42



N5002 Natural Choice Plover p.42



N5002 Natural Choice Plover p.42



G1012 Grange Wilton Tallow p.31



N5003 Natural Choice Cobble  
p.42



# Technical Information

Please see the following pages for technical information related to each current Ulster stock product and range.

Range /Design	Ref No.	Widths Available (m)	Repeat Length	Repeat Type	Suitability	Centres on 0.91m	Tog Rating
<b>Anatolia</b>							
Scroll	2288, 2298	4.57, 3.66, 2.74, 1.83 & 0.91	0.46m	Self Match	Extra Heavy Wear	No	1.7
Medallion	2287, 2293	4.57, 3.66, 2.74, 1.83 & 0.91	0.91m	Self Match	Extra Heavy Wear	No	1.7
Shirvan	2374, 2623	4.57, 3.66, 2.74, 1.83 & 0.91	0.91m	Self Match	Extra Heavy Wear	No	1.7
Runner	2289, 2299	0.69	0.91m	Runner	Extra Heavy Wear	n/a	1.7
<b>Athenia</b>							
Motif	2566, 2707	4.57, 3.66, 2.74, 1.83 & 0.91	0.28m	Self Match	Heavy Wear	No	1.7
Pindot	2572	4.57, 3.66, 2.74, 1.83 & 0.91	0.09m	Self Match	Heavy Wear	No	1.7
Runner	2583, 2711, 20056	0.69	0.03m	Runner	Heavy Wear	n/a	1.7
<b>Blossom</b>							
All	20053	4.57, 3.66, 2.74, 1.83 & 0.91	0.91m	Self Match	Heavy Wear	No	1.7
<b>Braeburn</b>							
All	20084	4.57, 3.66, 2.74, 1.83 & 0.91	0.46m	Self Match	Extra Heavy Wear	Yes	1.7
<b>Boho Collection</b>							
Bloomsbury	30003	4, 3, 2, 1	1m	Self Match	Heavy Wear	Yes	1.7
Chic	30002	4, 3, 2, 1	0.02m	Self Match	Heavy Wear		1.7
Hamilton	30006	4, 3, 2, 1	0.25m	Self Match	Heavy Wear		1.7
Hemingway	30004	4, 3, 2, 1	0.29m	Self Match	Heavy Wear		1.7
Tribe	30001	4, 3, 2, 1	0.29m	Self Match	Heavy Wear		1.7
Rhapsody	30005	4, 3, 2, 1	1m	Self Match	Heavy Wear		1.7



Technical Information

Range /Design	Ref No.	Widths Available (m)	Repeat Length	Repeat Type	Suitability	Centres on 0.91m	Tog Rating
<b>Country House Collection</b>							
Beaumont	20016	4.57, 3.66, 2.74, 1.83 & 0.91	0.30m	Self Match	Extra Heavy Wear	Yes	1.5
Kazan	20018	4.57, 3.66, 2.74, 1.83 & 0.91	0.91m	Self Match	Extra Heavy Wear	Yes	1.5
Kazan Runner	20019	4.57, 3.66, 2.74, 1.83 & 0.91	0.91m	Runner	Extra Heavy Wear	Yes	1.5
<b>Glenavy</b>							
Kilim	81/2055	4.57, 3.66, 2.74, 1.83 & 0.91	0.47m	Self Match	Heavy Wear	No	1.7
Vesuvius, Fantasia	21/2886, 11/2971	4.57, 3.66, 2.74, 1.83 & 0.91	0.94m	Self Match	Heavy Wear	No	1.7
Romanza	11/2970	4.57, 3.66, 2.74, 1.83 & 0.91	0.94m	Self Match	Heavy Wear	No	1.7
Ethnic Panel Rust	2/2648	4.57, 3.66, 2.74, 1.83 & 0.91	0.95m	Self Match	Heavy Wear	Yes	1.7
Red Persian	21/2133	4.57, 3.66, 2.74, 1.83 & 0.91	0.95m	Self Match	Heavy Wear	Yes	1.7
Siranda	6/2474	4.57, 3.66, 2.74, 1.83 & 0.91	0.95m	Self Match	Heavy Wear	No	1.7
Persian Garden	2/2385	4.57, 3.66, 2.74, 1.83 & 0.91	0.95m	Half Drop	Heavy Wear	No	1.7
White Shirzar	1/2467	4.57, 3.66, 2.74, 1.83 & 0.91	0.95m	Half Drop	Heavy Wear	No	1.7
Overture	2/2162	4.57, 3.66, 2.74, 1.83 & 0.91	0.95m	Half Drop	Heavy Wear	No	1.7
Hampton Court	7/2984	4.57, 3.66, 2.74, 1.83 & 0.91	0.95m	Half Drop	Heavy Wear	No	1.7
Antique Hampton Court	41/20064	4.57, 3.66, 2.74, 1.83 & 0.91	0.95m	Half Drop	Heavy Wear	No	1.7
Red Hampton Court	21/20065	4.57, 3.66, 2.74, 1.83 & 0.91	0.95m	Half Drop	Heavy Wear	No	1.7
Blue Cameo, Green Cameo	5/2432, 4/2452	4.57, 3.66, 2.74, 1.83 & 0.91	0.95m	Half Drop	Heavy Wear	No	1.7
Fezhir, Green Buttons & Bows	6/2421, 4/2353	4.57, 3.66, 2.74, 1.83 & 0.91	0.95m	Half Drop	Heavy Wear	No	1.7
Mayfayre	6/2414	4.57, 3.66, 2.74, 1.83 & 0.91	0.95m	Half Drop	Heavy Wear	No	1.7
Firedance	10/2264	4.57, 3.66, 2.74, 1.83 & 0.91	0.95m	Half Drop	Heavy Wear	No	1.7
Tabriz	2/2418	4.57, 3.66, 2.74, 1.83 & 0.91	0.95m	Half Drop	Heavy Wear	No	1.7
Kashmir	2/3144	4.57, 3.66, 2.74, 1.83 & 0.91	0.95m	Half Drop	Heavy Wear	No	1.7
Seychelles	17/2045	4.57, 3.66, 2.74, 1.83 & 0.91	1.08m	Half Drop	Heavy Wear	No	1.7
Kimono	11/20066	4.57, 3.66, 2.74, 1.83 & 0.91	0.95m	Half Drop	Heavy Wear	No	1.7
Runners	All	0.91	0.95m	Runner	Heavy Wear	Yes	1.7
<b>Glendun</b>							
Blue Lorenzo	5/2380	4.57, 3.66, 2.74, 1.83 & 0.91	0.91	Self Match	Extra Heavy Wear	Yes	1.8
Samarkand	3/2152	4.57, 3.66, 2.74, 1.83 & 0.91	0.63	Self Match	Extra Heavy Wear	Yes	1.8
Blue Caliph, Canterbury	5/2446, 1/2431	4.57, 3.66, 2.74, 1.83 & 0.91	0.91	Half Drop	Extra Heavy Wear	No	1.8
Rosemoor	11/20063	4.57, 3.66, 2.74, 1.83 & 0.91	0.97	Half Drop	Extra Heavy Wear	No	1.8

Technical Information

Range /Design	Ref No.	Widths Available (m)	Repeat Length	Repeat Type	Suitability	Centres on 0.91m	Tog Rating
<b>Glenmoy</b>							
Blackwatch	12/2756	4.57, 3.66, 2.74, 1.83 & 0.91	0.31m	Self Match	Extra Heavy Wear	Yes	1.7
Beige Chisholm,Royal Stewart	2/2755, 10/2754	4.57, 3.66, 2.74, 1.83 & 0.91	0.46m	Self Match	Extra Heavy Wear	Yes	1.7
Antique Sunset	21/2652	4.57, 3.66, 2.74, 1.83 & 0.91	0.80m	Self Match	Extra Heavy Wear	Yes	1.7
Seville	2/2157	4.57, 3.66, 2.74, 1.83 & 0.91	0.91m	Self Match	Extra Heavy Wear	Yes	1.7
Red Sultan, Black Sultan	21/2650, 91/2650	4.57, 3.66, 2.74, 1.83 & 0.91	0.91m	Self Match	Extra Heavy Wear	Yes	1.7
Toledo, Persian Garden	1/2280, 10/2160	4.57, 3.66, 2.74, 1.83 & 0.91	0.91m	Half Drop	Extra Heavy Wear	Yes	1.7
Madame Pompadour, Vivaldi	6/2470, 2/2371	4.57, 3.66, 2.74, 1.83 & 0.91	0.91m	Half Drop	Extra Heavy Wear	No	1.7
Green Vivaldi	4/2371	4.57, 3.66, 2.74, 1.83 & 0.91	0.91m	Half Drop	Extra Heavy Wear	No	1.7
Robertson	91/20082	4.57, 3.66, 2.74, 1.83 & 0.91	0.31m	Self Match	Extra Heavy Wear	Yes	1.7
Douglas	91/20083	4.57, 3.66, 2.74, 1.83 & 0.91	0.23m	Self Match	Extra Heavy Wear	Yes	1.7
<b>Grange Wilton</b>							
All	All	5, 4, 3, 2, 1	n/a	n/a	Extra Heavy Wear	n/a	1.5
<b>HABITÜS</b>							
All	All	5, 4, 3, 2, 1	n/a	Straight Match	Heavy Wear	n/a	1.6
<b>Heritage Twist</b>							
All	All	5, 4, 3, 2, 1	n/a	n/a	Extra Heavy Wear	n/a	1.7
<b>Natural Choice Axminster</b>							
Chenille	20048	4.57, 3.66, 2.74, 1.83 & 0.91	0.61m	Self Match	Heavy Wear	No	1.7
Cove	20047	4.57, 3.66, 2.74, 1.83 & 0.91	0.41m	Self Match	Heavy Wear	No	1.7
Fresco	20045	4.57, 3.66, 2.74, 1.83 & 0.91	0.46m	Self Match	Heavy Wear	No	1.7
Garland	20042	4.57, 3.66, 2.74, 1.83 & 0.91	0.91m	Self Match	Heavy Wear	No	1.7
Rowan	20043	4.57, 3.66, 2.74, 1.83 & 0.91	0.46m	Self Match	Heavy Wear	No	1.7
<b>Natural Choice Plains</b>							
All	All	5, 4, 3, 2, 1	n/a	n/a	Heavy Wear	n/a	1.5

## Technical Information

Range /Design	Ref No.	Widths Available (m)	Repeat Length	Repeat Type	Suitability	Centres on 0.91m	Tog Rating
<b>Open Spaces</b>							
Capri	1173	5, 4, 3, 2, 1	n/a	n/a	Heavy Wear	No	1.0
Dubai	1319	5, 4, 3, 2, 1	n/a	n/a	Heavy Wear	n/a	1.6
Monaco	1175	5, 4, 3, 2, 1	n/a	n/a	Heavy Wear	n/a	1.0
Panama	1170	5, 4, 3, 2, 1	n/a	n/a	Heavy Wear	n/a	1.0
<b>Open Spaces (Laneve)</b>							
Auckland	1428	5, 4, 3, 2, 1	n/a	n/a	Heavy Wear	n/a	1.2
Queenstown	1431	5, 4, 3, 2, 1	n/a	n/a	Heavy Wear	n/a	1.2
Wellington Stripe	1433	5, 4, 3, 2, 1	n/a	n/a	Heavy Wear	No	1.2
<b>Sheriden</b>							
Cameo	2461, 2614	4.57, 3.66, 2.74, 1.83 & 0.91	0.31m	Self Match	Extra Heavy Wear	No	1.5
	2558, 2617	4.57, 3.66, 2.74, 1.83 & 0.91	0.31m	Self Match	Extra Heavy Wear	No	1.5
Pindot	2462, 2562	4.57, 3.66, 2.74, 1.83 & 0.91	0.05m	Self Match	Extra Heavy Wear	No	1.5
Runner	2605, 2574	4.57, 3.66, 2.74, 1.83 & 0.91	0.15m	Runner	Extra Heavy Wear	n/a	1.5
	2622, 2576	0.69 0.69	0.15m	Runner	Extra Heavy Wear	n/a	1.5
<b>Tazmin</b>							
Motif, Pindot	2628, 2710, 2724	4.57, 3.66, 2.74, 1.83 & 0.91	0.23m	Self Match	Heavy Wear	Yes	1.7
Runner	2634, 2716, 2718	0.69	0.46m	Runner	Heavy Wear	n/a	1.7
<b>Ulster Velvet</b>							
All	All	5, 4, 3, 2, 1	n/a	n/a	Extra Heavy Wear	n/a	1.5
<b>Watercolours</b>							
All	All	4.57, 3.66, 2.74, 1.83 & 0.91	91.4cm	Half Drop	Extra Heavy Wear	n/a	1.75



## Technical Information

Range /Design	Ref No.	Widths Available (m)	Repeat Length	Repeat Type	Suitability	Centres on 0.91m	Tog Rating
<b>York Wilton</b>							
All	All	5, 4, 3, 2, 1	n/a	n/a	Extra Heavy Wear	n/a	1.5
<b>the mix</b>							
			1m x 1m				
			0.5m x				
Bloom	All	4	0.52m	Half Drop		No	1.5
Contour	All	4	0.5m x	Half Drop	All products	No	1.5
Crackle	All	4	0.52m	Half Drop	within the mix are	No	1.5
Freedom	All	4	1m x	Half Drop	suitable for Extra	No	1.5
Shimmer	All	4	98.8cm	Self Match	Heavy Domestic/	No	1.5
Silhouette	All	4	1m x 1m	Half Drop	Heavy Contract	No	1.5
Strata	All	4	1m x 1m	Self Match	Wear	No	1.5
Swirl	All	4	2m x 1m	Self Match		No	1.5
			0.5m x				
			0.39 m				



the mix Strata Stone (86604-8)



# Additional Information

## Retailers & Consumers

Ulster strives to provide you, our retailers and consumers with the best possible service; we offer a range of tools to assist with that all-important purchasing decision.

## Ordering Samples



We know that seeing an image in a brochure is nothing like holding and feeling our actual product in your hand. Samples are of crucial importance to both you - our retailers and the consumer and are often the source of interior design inspiration, especially for matching against already purchased soft furnishings.

It is for that reason that we have created an extremely high calibre sample request service ensuring prompt service for the customer. Each sample is professionally presented in branded packaging and can be posted directly to you or the consumer. Delivery is guaranteed within five days of placing the sample request however in most cases samples should arrive within two days.

Samples can be ordered by emailing [samples@ulstercarpets.com](mailto:samples@ulstercarpets.com) or via our website.

## Website ([www.ulstercarpets.com](http://www.ulstercarpets.com))



Our contemporary and easy to use website showcases all of our products to perfection with improved functionality allowing you to easily view all of our products. You can add any swatches you require to your shopping cart, and complete your free sample order. The website also provides useful consumer information such as after care advice, carpet terms and instructions on how to calculate the amount of carpet you require.

To be added to our 'Where to Buy' section as a stockist, please contact your local Ulster rep.

Downloadable versions of all our brochures are also available online. You can keep tabs on all the latest Ulster news in the blog section of our website as well as on our social media channels. Our website is compatible with tablets, desktops, laptops and mobile.

### Social Media Links



[facebook.com/ulstercarpets](https://facebook.com/ulstercarpets)



[twitter.com/ulstercarpets](https://twitter.com/ulstercarpets)



[pinterest.com/ulstercarpets](https://pinterest.com/ulstercarpets)



[linkedin.com/company/ulster-carpets](https://linkedin.com/company/ulster-carpets)

## Aftercare

We know that customer service doesn't stop with the purchase. No matter how often carpets are vacuumed and how many protective mats are in place, spots and stains will occur now and then. Ulster have put together an aftercare guide to deal with all these occurrences which can be viewed on our website ([www.ulstercarpets.com](http://www.ulstercarpets.com)). We hope that this will service as a useful reference tool for you, our retailers and our consumers.

For regular cleaning we recommend that you use a good quality stand up vacuum cleaner, with a rotating brush or beater bar. This will help to dislodge dirt and increase the lifespan of your carpet.





# Additional Information

## Retailers

Ulster continually researches and invests in different ways of keeping our retailers up to date. Aimed at the growing number of IT-savvy retailers, we would like to draw your attention to the following.

## Retailer eNewsletter



Do you receive Ulster's retailer eNewsletter? If not please sign up by emailing [marketing@ulstercarpets.com](mailto:marketing@ulstercarpets.com)

The eNewsletter is a great way of promoting the latest happenings at Ulster and falls in line with our eco-friendly policy of reducing the volume of printed material we produce. The style and layout has been revamped in line with our website and is sure to add a little brightness and cheer to your inbox!

Through our eNewsletters we keep retailers informed about product changes such as range launches and discontinuations as well as interesting and relevant company news. A great way to keep in touch!

## Web Service

As always our Customer Service Team will be happy to assist you in any way.

Alternatively why not try Ulster's Web Service? This will serve as an effective tool to facilitate your relationship with the consumer, and is available 24 hours a day, 7 days a week. Such an innovative service tool has proven especially useful at weekends, when the Customer Services team are not on hand to answer queries directly.

The stock enquiry facility enables you to search by either stock range, design, width or by matching batch with information also available on future planned stock dates. You can also place orders online and track your orders from placement to delivery.

If you are not already a member of Ulster's Web Service simply visit [www.ulsterwebservice.com](http://www.ulsterwebservice.com), click "Register" and follow the simple steps.



## Customer Services



If you can't find the information you are looking for on our website or via the Web Service, our Customer Services Team are always on hand to answer your queries. Our Northern Ireland based team have won numerous awards for their friendly and efficient service and can be contacted during office hours Monday - Friday.

Alternatively you can give your local Ulster representative a call and they will be happy to assist you. You can find the contact details of your Ulster representative for your area in your pricelist.

To speak to the Customer Services Team, telephone: + 44 (0) 28 3833 4433



At Ulster Carpets we pride ourselves on creating beautiful photography of our stunning carpets. If you would like to use these images to promote the Ulster brand in your store or on your website, please get in touch with us by emailing; [marketing@ulstercarpets.com](mailto:marketing@ulstercarpets.com)



Ulster Carpets  
Castleisland Factory  
Craigavon  
Northern Ireland  
BT62 1EE

Tel: +44 (0) 28 3833 4433

Fax: +44 (0) 28 3833 3142

ulster™

[www.ulstercarpets.com](http://www.ulstercarpets.com)